

Studies on the Subfamily Steninae (Coleoptera, Oxyporidae) from Japan

XV. Subgenus *Hypostenus* of the Genus *Stenus* LATREILLE, Part 7¹⁾

Shun-Ichiro NAOMI²⁾

Entomological Laboratory, Faculty of Agriculture,
Kyushu University, Fukuoka, 812 Japan

Abstract A key to 51 species of the subgenus *Hypostenus* from Japan is provided. A new species, *Stenus oshimaensis* is described from Amami-Oshima Is., Kagoshima Pref., and *S. bohemicus* MACHULKA and *S. flavidulus paederinus* CHAMPION are first recorded from Japan.

Stenus flavidulus SHARP

Stenus flavidulus SHARP, 1889, Anns. Mag. nat. Hist., (6), 3: 334; BERNHAUER & SCHUBERT, 1911, Coleopt. Cat., (29): 174; ADACHI, 1950, Icon. Ins. Japon., p. 996; ADACHI, 1957, J. Tōyō Univ., (11): 191; NAKANE, 1963, Icon. Ins. Japon. Col. nat. ed., 2: 86; PUTHZ, 1968, Dt. ent. Z., 14: 142; SHIBATA, 1976, Annual Bull. Nichidai Sanko, (19): 200.

Specimens examined. 1 ex., Nakanogō-Daigo-Yama, Mitsune, Hachijō Is., Tokyo, 1–vi–1964, Y. HIRASHIMA & M. SHIGA leg.; 1 ex., Shōbaru City, Hiroshima Pref., 14–ix–1985, I. OKAMOTO leg.

Distribution. Japan (Honshu, Hachijō Is., Yakushima Is.).

Stenus flavidulus paederinus CHAMPION

(Fig. 1 A, D, H)

Stenus flavidulus paederinus: PUTHZ, 1967, Dt. ent. Z., 14: 143; PUTHZ, 1973, J. Ent., (B), 42: 72; ROUGEMONT, 1981, Annli. Mus. civ. Stor. nat. Genova, 83: 374; PUTHZ, 1981, Reichenbachia, 19: 8; ROUGEMONT, 1983, Nat. Hist. Bull. Siam Soc., 31: 53.

Stenus paederinus CHAMPION, 1924, Ent. mon. Mag., 60: 160; CAMERON, 1940, Proc. R. ent. Soc. Lond., (B), 9: 87.

Specimens examined. 1 ex., Akagina, Amami-Oshima Is., Kagoshima Pref., 17–vii–1954, S. MIYAMOTO & Y. HIRASHIMA leg.; 1 ex., Shinmura, Amami-Oshima Is., Kagoshima Pref., 3–xi–1962, C. OHKUMA leg.; 1 ex., Hatsuno, Amami-Oshima Is., Kagoshima Pref., 8–v–1982, T. OGATA leg.; 1 ex., Yona, Okinawa Main Is.,

1) Contribution from the Entomological Laboratory, Faculty of Agriculture, Kyushu University, Fukuoka (Ser. 3, No. 288).

2) Present address: Natural History Museum and Institute, Chiba, 955–2 Aoba-chō, Chiba, 280 Japan.

Okinawa Pref., 18-iii-1975, Y. WATANABE leg.; 1 ex., same locality, 20-iv-1986, M. YOSHIDA leg.; 3 exs., Genkagawa River, Haneji, Okinawa Main Is., Okinawa Pref., 26-ii-1988, K. MORIMOTO leg.; 1 ex., Yomitan-son, Okinawa Main Is., Okinawa Pref., 25-ii-1988, K. MORIMOTO leg.

Distribution. Japan (Amami-Oshima Is., Okinawa Main Is.); Oriental Region.

Remarks. *Stenus flavidulus paederinus* CHAMPION is first recorded from Japan, and is easily distinguished from the nominotypical subspecies by the blackish elytral markings. The markings are separated into two parts, each elongate oval in shape (Fig. 1 D), or broadly continuous at the suture (Fig. 1 A). The male genitalia are figured for comparison (Fig. 1 H).

Stenus bohemicus MACHULKA

(Fig. 1 B)

Stenus bohemicus MACHULKA, 1947, Acta ent. Mus. natn. Prage, **25**: 88; LOHSE, 1964, Staph. I, Käfer Mitt.-Eur., **4**: 122; SMETANA, 1966, Acta ent. bohemoslov., **63**: 327; PUTHZ, 1967, Reichenbachia, **9**: 82; PUTHZ, 1971, Faun. Abh. staat. Mus. Tierk. Dresden, **3**: 141; PUTHZ, 1971, Ent. Blät., **67**: 84; PUTHZ, 1972, Ent. Blät., **68**: 152; PUTHZ, 1974, Fragm. faun., **19**: 439.

Specimens examined. 8 exs., Nakayama Pass, Hokkaido, 22-vi-1986, K. MORIMOTO leg.; 6 exs., Ashoro, Hokkaido, 25-vi-1986, K. MORIMOTO leg.; 1 ex., Aioi, Hokkaido, 24-vi-1986, K. MORIMOTO leg.; 1 ex., Obihiro City, Hokkaido, 6-vi-1980, H. TOGAWA leg.; 1 ex., Piribetsu, Hokkaido, 29-vii-1986, S. NOMURA leg.

Distribution. Japan (Hokkaido); Palearctic Region.

Remarks. This species is first reported from Japan and is collected by sweeping grasses at lowlands and low mountainous areas in Hokkaido.

Stenus oshimaensis sp. nov.

(Fig. 1 C)

Male and female. Body length: 3.8–4.5 mm.

Body black and very shiny; labrum reddish brown; antennae, maxillary palpi and legs pale yellow to yellow.

Head narrower than elytra (0.93: 1), 1.59 times as broad as long, frontoclypeal area covered with silvery white short hairs, interocular area almost flat to weakly convex, with a pair of depressions, which are longitudinal, shallow, indistinct and subparallel, median part between the depressions very weakly convex; punctures large, round, distinct and almost regular, interstices between punctures smooth and very shiny. Antennae slender, reaching posterior margin of pronotum, each segment much longer than broad, 3rd to 8th subequal in breadth, 9th to 11th forming a loose club, with relative lengths of segments from base to apex as 10: 10: 18: 16: 13: 11: 10: 9: 10: 10: 11.

Pronotum shorter than elytra (0.77: 1), longer than broad (1.18: 1), broadest

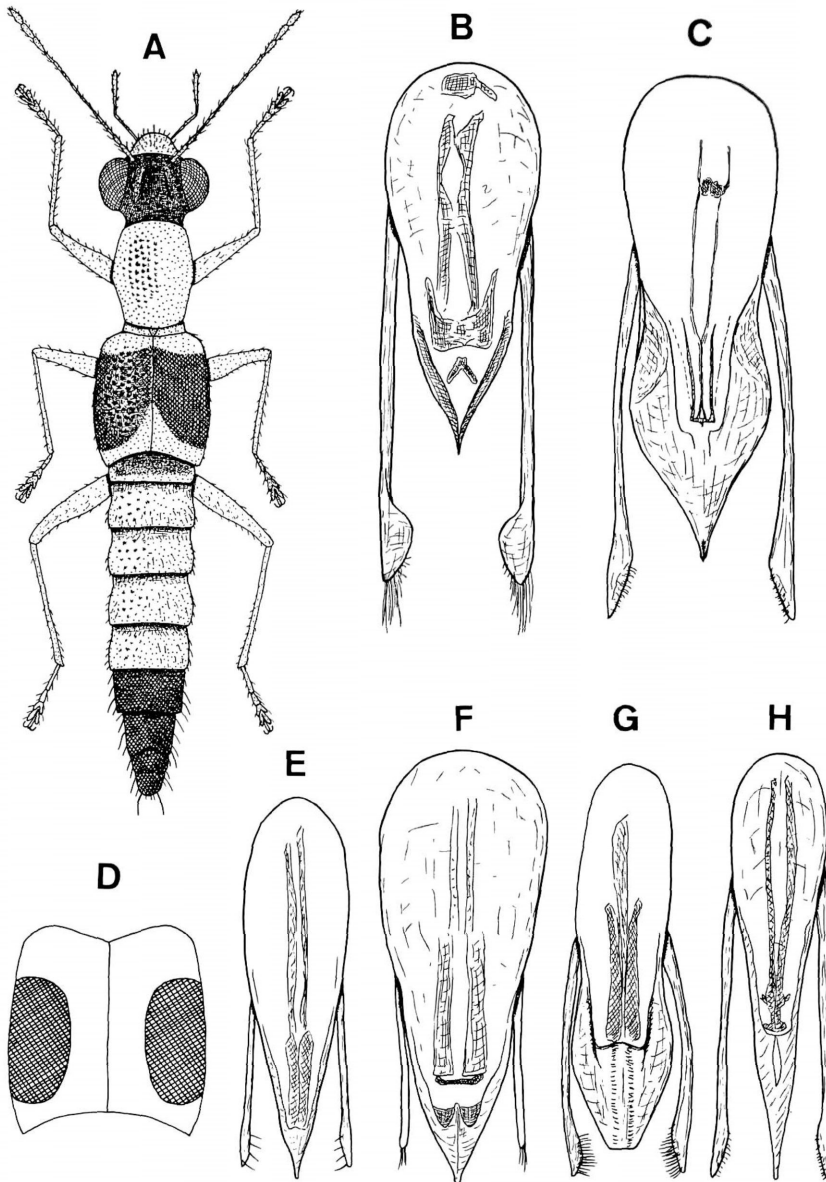


Fig. 1. A, D, H, *Stenus flavidulus paederinus* CHAMPION; B, *S. bohemicus* MACHULKA; C, *S. oshimaensis* sp. nov.; E, *S. dissimilis* SHARP; F, *S. cicindeloides* (SCHALLER); G, *S. velox* SHARP. A, Habitus; B, C, E-H, male genitalia in dorsal view; D, elytra.

near the middle, then gently narrowed both anteriorly and posteriorly; disk almost smooth, with neither median depression nor smooth spot; punctures round, distinct,

dense and a little larger in center than near anterior and posterior margins, interstices between punctures smooth and very shiny.

Elytra a little longer than broad (1.03: 1), well convex above, developed at anterolateral corners, and gently rounded at side margins and posterolateral corners, hind margins together forming an arcuate emargination; disk even, with punctures dense, round and regular. Hind wings functional.

Legs elongate, hind tarsi 0.49 times as long as hind tibiae, with 2nd tarsomere distinctly broader than 1st, broadly emarginate at apical margin, 3rd and 4th each strongly bilobed.

Abdomen distinctly narrower than elytra, subparallel-sided, 3rd to 5th segments each broadly impressed at base; punctures moderate in density from 3rd to 8th segments throughout, but becoming gradually smaller posteriorly, interstices between punctures almost smooth and very shiny on 3rd to 6th terga, minutely sculptured on 7th to 8th terga; pubescence sparse, silvery white and decumbent.

Male. Eighth sternum with a deep and V-shaped emargination at the middle of posterior margin; 9th sternum very shallowly emarginate and minutely serrate at posterior margin, gently rounded and without projection at apicolateral corners. Genitalia (Fig. 1 C) with median lobe bulbous at base, moderately constricted near the middle, acutely pointed at apex which is longitudinally carinate on dorsal side; parameres very slender, extending beyond apex of median lobe, obliquely truncate at apices, each with short hairs on apico-internal margin.

Female. Eighth sternum entire at posterior margin.

Holotype, male (Type No. 2695, Kyushu Univ.), Marubatake, Amami-Ohshima Is., Kagashima Pref., 22-iii-1986, T. OGATA leg. Paratypes, 2 exs., same data as for holotype; 1 ex., Hatsuno, Amami-Ohshima Is., Kagoshima Pref., 11-xi-1962, Y. MIYATAKE leg.; 1 ex., Nishinakama, Amami-Ohshima Is., Kagoshima Pref., 10-iv-1976, H. MAKIHARA leg.; 1 ex., Kanpira Fall, Iriomote Is., Okinawa Pref., 15-iv-1975, H. IRIE leg.

Distribution. Japan (Amami-Ohshima Is., Ishigaki Is.).

Remarks. This new species is similar to *Stenus amoenus* BENICK, 1916, but the elytra are immaculate and the 8th sternum of the male is straight at the posterior margin.

Key to the Species of the Subgenus *Hypostenus* of Japan

This key is given for all the 51 Japanese species of the subgenus *Hypostenus*. Keys to some species of *Hypostenus* given by PUTHZ (1968) and HRMÁDKA (1982) are referred.

- 1 (28) Head usually narrower than or as broad as elytra; elytra well developed at humeral parts; hind wings developed.
- 2 (9) Body smaller (2.5–3.4 mm).
- 3 (6) Frons broader; punctures on dorsum larger and denser.
- 4 (5) Elytra longer; median lobe of male genitalia broader in apical half (PUTHZ,

- 1968 a, p. 201).....*S. cribellatus* MOTSCHULSKY (= *S. confertus* SHARP).
- 5 (4) Elytra shorter; median lobe of male genitalia narrower in apical half (Fig. 1 E).....*S. dissimilis* SHARP.
- 6 (3) Frons narrower; punctures on dorsum smaller and sparser.
- 7 (8) Pronotum longer, weakly rounded at sides.....*S. concinnus* SHARP.
- 8 (7) Pronotum shorter, strongly rounded at sides.....*S. oblitus* SHARP.
- 9 (2) Body larger (4.1–6.0 mm).
- 10 (13) Body broader; 3rd to 5th abdominal segments each with a median longitudinal keel at base.
- 11 (12) Body less strongly shiny; punctures on dorsum smaller; legs with tibiae entirely black; parameres of male genitalia extending much beyond apex of median lobe (Fig. 1 B).....*S. bohemicus* MACHULKA.
- 12 (11) Body more strongly shiny; punctures on dorsum larger; legs with tibiae yellowish at least at inner sides; parameres of male genitalia not extending beyond apex of median lobe (Fig. 1 F).....
.....*S. cicindeloides* (SCHALLER).
- 13 (10) Body narrower; 3rd to 5th abdominal segments each without median keel at base.
- 14 (15) Pronotum and 3rd to 6th abdominal segments yellowish red; male genitalia as in Fig. 1 H.
- a. Elytra entirely yellow to yellowish red.....*S. flavidulus flavidulus* SHARP.
- b. Elytra yellowish with blackish markings (Fig. 1 A, D).....
.....*S. flavidulus paederinus* CHAMPION.
- 15 (14) Pronotum and abdomen blackish.
- 16 (23) Body blackish with dark bronze reflection; interocular area without distinctly elevated median part.
- 17 (20) Head a little narrower than or almost as broad as elytra; interocular area more deeply concave.
- 18 (19) Pronotum with smaller punctures; median lobe of male genitalia subparallel-sided.....*S. hanami* HROMÁDKA.
- 19 (18) Pronotum with larger punctures; median lobe of male genitalia moderately constricted near the middle (Fig. 1 G).....*S. velox* SHARP.
- 20 (17) Head distinctly narrower than elytra; interocular area less deeply concave.
- 21 (22) Median lobe of male genitalia narrower, narrowed apically; parameres with longer hairs on apico-internal parts.....*S. currax* SHARP.
- 22 (21) Median lobe of male genitalia broader, gently constricted near the middle; parameres with shorter hairs on apico-internal parts (Fig. 1 C).....
.....*S. oshimaensis* sp. nov.
- 23 (16) Body blackish with bluish reflection; interocular area with a distinctly elevated median part.
- 24 (27) Punctures on pronotum larger; pubescence on abdomen erect.
- 25 (26) Body smaller (4.3–4.5 mm); abdomen with fine and dense punctures on

- 7th and 8th terga. *S. weisei* BERNHAUER.
- 26 (25) Body larger (6.0 mm); abdomen with coarse punctures on 7th and 8th terga. *S. sedatus* SHARP.
- 27 (24) Punctures on pronotum smaller; pubescence on abdomen decumbent *S. mercator* SHARP.
- 28 (1) Head usually broader than elytra (except for *S. oni* NAOMI); elytra moderately or strongly constricted at base; hind wings reduced and not functional (*S. rufescens* complex).
- 29 (30) Abdomen with sparse, long and erect hairs. *S. jambar* NAOMI.
- 30 (29) Abdomen with dense, short and decumbent pubescence.
- 31 (36) Median lobe of male genitalia with a large and broad emargination at apex.
- 32 (33) Antennae shorter and thicker; pronotum, elytra and 3rd to 6th abdominal segments dark red. *S. oni* NAOMI.
- 33 (32) Antennae longer and thinner; pronotum, elytra and 3rd to 6th abdominal segments black.
- 34 (35) Body broader; labrum blackish; eyes more strongly convex; antennae reaching posterior margin of pronotum; 3rd to 7th abdominal sterna each with a depression or flat area at posteromedian part in male; parameres of male genitalia extending beyond apex of median lobe *S. daimio* NAOMI.
- 35 (34) Body narrower; labrum red to dark red; eyes less strongly convex; antennae not reaching posterior margin of pronotum; 7th sternum only simply flat at posteromedian part in male; parameres of male genitalia extending a little before apex of median lobe. *S. imasakai* NAOMI.
- 36 (31) Median lobes of male genitalia various in shape, but never provided with a large emargination at apical margin.
- 37 (46) Parameres of male genitalia each with one or two tufts of hairs.
- 38 (43) Interocular area sparsely punctate on the median part between longitudinal depressions; parameres of male genitalia each with two tufts of short hairs.
- 39 (42) Labrum reddish; eyes less strongly convex; 7th sternum flat or depressed at posteromedian part in male; median lobe of male genitalia broader in apical half; parameres broader, straightly or obliquely truncate at apices.
- 40 (41) Hind tarsi with 1st tarsomeres thinner; 7th sternum flat at posteromedian part in male; parameres of male genitalia curved, straightly truncate at apices. *S. hijiri* NAOMI.
- 41 (40) Hind tarsi with 1st tarsomeres thicker; 7th sternum depressed at posteromedian part in male; parameres of male genitalia almost straight, obliquely truncate at apices. *S. carura* NAOMI.
- 42 (39) Labrum dark brown to black; eyes more strongly convex; 7th sternum

- evenly convex at posteromedian part in male; median lobe of male genitalia narrower in apical half; parameres narrower and pointed at apices.....*S. ryugu* NAOMI.
- 43 (38) Interocular area moderately or densely punctate on the median part between longitudinal depressions; parameres of male genitalia each with a tuft of short hairs.
- 44 (45) Body larger (3.5–3.7 mm); 7th sternum flat at posteromedian part in male; median lobe of male genitalia constricted at anterior 1/3; parameres longer.....*S. hirashimai* NAOMI.
- 45 (44) Body smaller (3.3 mm); 7th sternum shallowly concave at posteromedian part in male; median lobe of male genitalia almost elongate oval, without constriction; parameres shorter.....*S. syaca* NAOMI.
- 46 (37) Parameres of male genitalia without tuft of hairs.
- 47 (50) Median lobe of male genitalia distinctly constricted near apical 1/3 or the middle.
- 48 (49) Head entirely black; 8th sternum more shallowly emarginate at posterior margin in male; parameres of male genitalia gently curved outside behind apical 1/3.....*S. bosatsu* NAOMI.
- 49 (48) Head brownish; 8th sternum more deeply emarginate at posterior margin in male; parameres of male genitalia almost straight.....*S. akojagai* HROMÁDKA.
- 50 (47) Median lobe of male genitalia without distinct constriction.
- 51 (70) Seventh sternum with a distinct depression at posteromedian part in male (if the 7th sternum is flat, median lobe of male genitalia is provided with a median longitudinal suture at apical part).
- 52 (67) Median lobe of male genitalia with a median longitudinal suture at apical sclerotized part (if the median suture is absent, parameres do not extend much beyond the apex of median lobe).
- 53 (56) Head, pronotum and elytra red to reddish brown; 3rd abdominal sternum flat or depressed in male.
- 54 (55) Body narrower; abdomen with 4th to 5th sterna each flat at posteromedian part in male; median lobe of male genitalia narrower in apical half.....*S. gagyumontis* NAOMI.
- 55 (54) Body broader; abdomen with 4th sternum depressed at posteromedian part and 5th deeply so along the middle in full length in male; median lobe of male genitalia broader in apical half.....*S. enma* NAOMI.
- 56 (53) Head blackish; pronotum and elytra yellowish brown to dark brown; 3rd abdominal sternum evenly convex transversely in male.
- 57 (64) Fourth to 5th abdominal sterna each flat or depressed at posteromedian part in male.
- 58 (59) Pronotum and elytra with rugose punctures; median lobe of male genitalia almost rounded at lateral margins in apical half.....

-*S. testaceopiceus* BERNHAUER.
- 59 (58) Pronotum and elytra with dense and round punctures; median lobe of male genitalia straight or sinuate at lateral margins in apical half.
- 60 (61) Median lobe of male genitalia narrower, with straight apicolateral margins
.....*S. jukata* HROMÁDKA.
- 61 (60) Median lobe of male genitalia broader, with sinuate apicolateral margins.
- 62 (63) Head broader; eyes more strongly convex; abdomen blackish; 8th sternum with a deep emargination in male; median lobe of male genitalia broader
.....*S. nakanei* HROMÁDKA.
- 63 (62) Head narrower; eyes less strongly convex; abdomen yellowish brown; 8th sternum with a shallow emargination in male; median lobe of male genitalia narrower.....*S. wasabi* HROMÁDKA.
- 64 (57) Fourth to 5th abdominal sterna each evenly convex transversely.
- 65 (66) Labrum reddish; interocular area with interstices between punctures minutely sculptured; 6th sternum flat at posteromedian part in male; median lobe of male genitalia arcuately emarginate at apicolateral margins
.....*S. shuheii* NAOMI.
- 66 (65) Labrum blackish, with reddish anterior margin; interocular area with interstices between punctures almost smooth; 6th sternum evenly convex transversely in male; median lobe of male genitalia straight at apicolateral margins.....*S. nyorai* NAOMI.
- 67 (52) Median lobe of male genitalia without median longitudinal suture at apical sclerotized part; parameres usually extending much beyond apex of median lobe.
- 68 (69) Seventh sternum with a narrower depression along the median line, sides of the depressions subparallel in male; parameres of male genitalia broader in apical parts.....*S. amida* NAOMI.
- 69 (68) Seventh sternum with a broader depression at posteromedian part in male, the depressed part almost semicircular, with sides gradually diverging toward posterior margin; parameres of male genitalia narrower in apical parts.....*S. akome* NAOMI.
- 70 (51) Seventh sternum convex, flat or with a shallow depression at posteromedian part in male.
- 71 (80) Parameres of male genitalia slender, extending far beyond apex of median lobe, but not or weakly broadened toward apex.
- 72 (77) Median lobe of male genitalia narrower in apical half, more or less pointed at apex.
- 73 (74) Median lobe of male genitalia obtusely pointed at apex, internal margin of apical sclerotized area with a median V-shaped emargination.....
.....*S. micuba* HROMÁDKA.
- 74 (73) Median lobe of male genitalia acutely pointed at apex, internal margin of apical sclerotized area without emargination.

- 75 (76) Eyes more strongly convex; interocular area more sparsely punctate; median lobe of male genitalia broadest near base, more acutely pointed at apex. *S. otohime* NAOMI.
- 76 (75) Eyes less strongly convex; interocular area more densely punctate; median lobe of male genitalia broadest near the middle, less acutely pointed at apex. *S. kaguyahime* NAOMI.
- 77 (72) Median lobe of male genitalia broader in apical half, rounded with or without acuminate projection at apex.
- 78 (79) Antennae with 3rd segment longer, 8th to 9th each elongate subtrapezoidal; interocular area with interstices between punctures distinctly sculptured; median lobe of male genitalia gently rounded at apical margin. *S. keman* NAOMI.
- 79 (78) Antennae with 3rd segment shorter, 8th to 9th each elongate oval; interocular area with interstices between punctures indistinctly sculptured; median lobe of male genitalia gently rounded with a minute and acuminate median projection at apical margin. *S. toshiharui* NAOMI.
- 80 (71) Parameres of male genitalia extending just to or a little beyond apex of median lobe (if the parameres are longer, they are strongly broadened at the median and/or apical part).
- 81 (90) Head bicolorous (black and yellowish).
- 82 (87) Median lobe of male genitalia with an acicular median projection.
- 83 (86) Interocular area yellowish brown to reddish brown in the middle, blackish along inner margins of eyes; parameres of male genitalia shorter.
- 84 (85) Antennae yellowish; 6th and 7th abdominal sterna each evenly convex transversely in male; median lobe of male genitalia with longer projection at apex. *S. asyura* NAOMI.
- 85 (84) Antennae blackish except for 4 or 5 yellowish basal segments; 6th and 7th abdominal sterna each flat or very shallowly depressed at posteromedian part in male; median lobe of male genitalia with shorter projection at apex. *S. santira* NAOMI.
- 86 (83) Interocular area reddish brown in anterior half, blackish in posterior half; parameres of male genitalia longer. *S. basara* NAOMI.
- 87 (82) Median lobe of male genitalia obtusely pointed at apex.
- 88 (89) Interocular area blackish in posteromedian part; male genitalia with median lobe narrower in apical half, parameres shorter. *S. kazami* NAOMI.
- 89 (88) Interocular area reddish brown in posteromedian part; male genitalia with median lobe broader in apical half, parameres longer. *S. bicara* NAOMI.
- 90 (81) Head unicolorous (blackish or yellowish brown).
- 91 (94) Elytra reddish brown to brown.
- 92 (93) Sixth and 7th sterna each shallowly depressed at posteromedian part in

- male; median lobe of male genitalia rounded at apicolateral corners
 *S. rufescens* SHARP.
- 93 (92) Sixth sternum evenly convex, 7th sternum flat at posteromedian part in
 male; median lobe of male genitalia angulate at apicolateral corners
 *S. okamotoi* NAOMI.
- 94 (91) Elytra entirely black.
- 95 (100) Interocular area with interstices between punctures minutely sculptured;
 median lobe of male genitalia broadest at apicolateral corners.
- 96 (99) Labrum entirely reddish brown; pronotum slightly uneven.
- 97 (98) Median lobe of male genitalia pointed at apex; parameres just reaching
 apex of median lobe, each with 3 or 4 setae on apico-internal part.
 *S. himiko* NAOMI.
- 98 (97) Median lobe of male genitalia with a minute emargination at the middle
 of apical margin; parameres extending a little beyond apex of median
 lobe, glabrous on apico-internal parts. *S. syugen* NAOMI.
- 99 (96) Labrum blackish, with reddish anterior margin; pronotum almost even
 *S. uneme* NAOMI.
- 100 (95) Interocular area with interstices between punctures almost smooth; median
 lobe of male genitalia broadest before the middle. *S. taoui* NAOMI.

Acknowledgements

I wish to express my sincere gratitude to Prof. Y. HIRASHIMA and Assoc. Prof. K. MORIMOTO of the Entomological Laboratory, Kyushu University for their constant guidance. My hearty thanks are due to Dr. V. PUTHZ (Limnologische Flußstation des Max-Planck Instituts für Limnologie, Hessen, Deutschland) for his kind help in various ways. I am also indebted to Dr. Y. HIRASHIMA, Dr. K. MORIMOTO, Dr. S. NOMURA and Dr. C. OHKUMA (Kyushu University), Mr. I. OKAMOTO (Kure City), Dr. S. MIYAMOTO (Fukuoka City) and Mr. Y. WATANABE (Kurashiki City) for their kind offer or loan of valuable hypostenine specimens examined in this paper.

要 約

直海俊一郎：日本産メダカハネカクシ亜科の研究。XV. メダカハネカクシ属 *Hypostenus* 亜属，7. — 本論文で，日本産 *Hypostenus* 亜属のメダカハネカクシ 51 種についての検索表を作成した。また，1 新種，*Stenus oshimaensis* を奄美大島から記載した。さらに，*S. bohemicus* MACHULKA および *S. flavidulus paederinus* CHAMPION を日本から初めて記録した。

Stenus oshimaensis sp. nov. は，*S. amoenus* BENICK, 1916 に似ているが，上翅は黒色無紋で，雄の第 8 腹節腹板後縁部が直線状であることにより区別できる。*Stenus bohemicus* MACHULKA は，ヨーロッパからソ連東部まで広域に分布する種であるが，今回，日本から北海道の平野部の草原のスウィーピングで初めて採集された。*Stenus flavidulus paederinus* CHAMPION は *S. flavidulus flavidulus* に似ているが，上翅が黄色で黒い斑紋があることにより容易に区別できる。本亜種は東洋区に広く分布するが，今回，国内の奄美大島および沖縄本島から初めて記録された。

References

- HROMÁDKA, L., 1982. Weitere neue *Stenus*-Arten von Japan (Coleoptera, Staphylinidae). *Fragm. coleopt.*, (33/34): 131–138.
- LOHSE, G., 1964. Staphylinidae I (Micropeplinae bis Tachyporinae). In FREUDE, H., K. HARDE & G. LOHSE (eds.), *Die Käfer Mitteleuropas*, 4: 1–264. Goecke & Evers, Krefeld.
- MACHULKA, V., 1947. Novy *Stenus* z Pribuzenstva *St. (Hypostenus) tarsalis* LJ. *Acta ent. Mus. natn. Pragae*, 25: 87–89.
- NAOMI, S., 1988. Studies on the subfamily Steninae (Coleoptera, Oxyporidae) from Japan. IX. Subgenus *Hypostenus* of the genus *Stenus* LATREILLE, Part 1. *Elytra, Tokyo*, 16: 73–84.
- 1989 a. Ditto. X. Subgenus *Hypostenus* of the genus *Stenus* LATREILLE (Part 2). *Akitu, Kyoto*, (N. S.), (105): 1–11.
- 1989 b. Ditto. XII. Subgenus *Hypostenus* of the genus *Stenus* LATREILLE, Part 4. *Elytra, Tokyo*, 17: 45–52.
- 1989 c. Ditto. XIII. Subgenus *Hypostenus* of the genus *Stenus* LATREILLE, Part 5. *Ibid.*, 17: 159–167.
- 1990 a. Ditto. XIV. Subgenus *Hypostenus* of the genus *Stenus* LATREILLE, Part 6. *Ibid.*, 18: 45–53.
- 1990 b. Ditto. XI. Subgenus *Hypostenus* of the genus *Stenus* LATREILLE (Part 3). *Akitu, Kyoto*, (N. S.), (113): 1–10.
- PUTHZ, V., 1968 a. On some East Palearctic Steni, particularly from Japan (Coleoptera, Staphylinidae). *Ent. Rev. Japan*, 20: 41–51.
- 1968 b. Die *Stenus*- und *Megalopinus*-Arten MOTSCHULSKYS und Bemerkungen über das Subgenus *Tesnus* REY, mit einer Tabelle der paläarktischen Vertreter (Coleoptera, Staphylinidae). *Notul. ent.*, 48: 197–219.
- ROUGEMONT, G. DE, 1981. The stenine beetles of Thailand (Coleoptera, Staphylinidae). *Anli. Mus. civ. Stor. nat. Genova*, 83: 349–386.
- SMETENA, A., 1966. Systematische und faunistische Beiträge zur Kenntnis der Staphylinidenfauna der Tschechoslovakei VII. *Acta ent. bohemoslov.*, 63: 322–336.